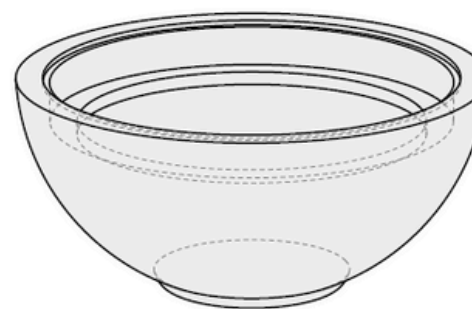
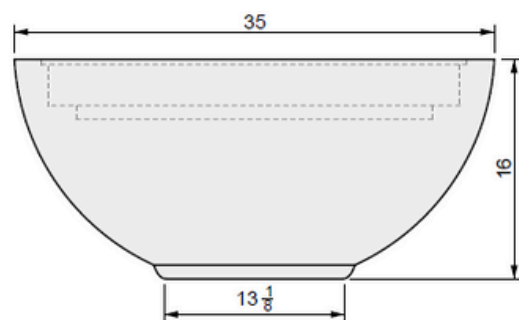


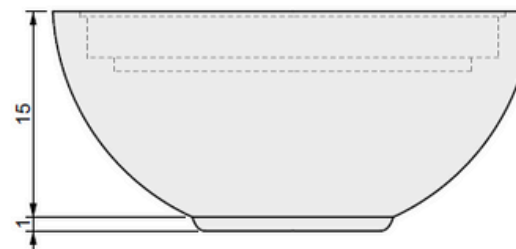
01 TOP VIEW



04 PERSPECTIVE



02 FRONT VIEW



03 SIDE VIEW



MONTANA
FIRE PITS

www.montanafirepits.com

CONFIDENTIAL

Any information data and drawings embodied in this document are proprietary and strictly confidential, are to be held as confidential and supplied with the understanding that they will not be disclosed, in whole or in part or in any form, to third parties without the prior written consent of Montana Fire Pits. All information, illustrations, screen shots, and data contained are herein Copyright © Montana Fire Pits. All rights reserved.

Model: Toba Agudo Fire Bowl

Size: 35" Diameter

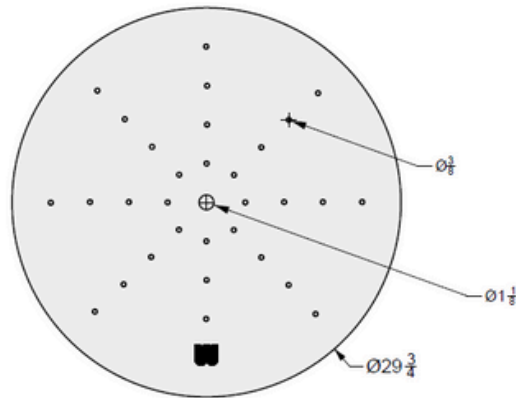
Material: GFRC

Burner: CFB180 - 180K BTU Original Burner

Fuel Pressure: Natural Gas: 7" Water Column
Propane: 11" Water Column

Weight: Approx. 250 lbs.

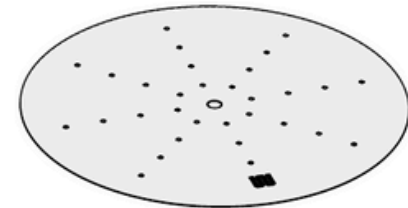
Plate Detail



01 TOP VIEW

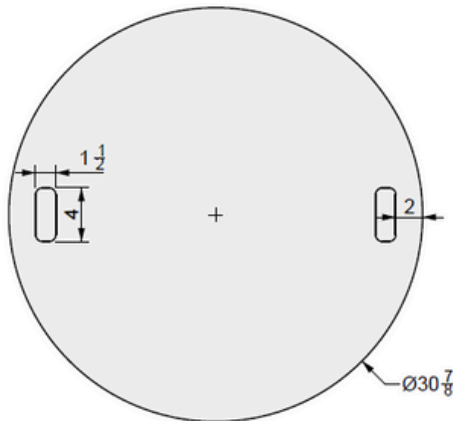


02 FRONT VIEW



03 PERSPECTIVE

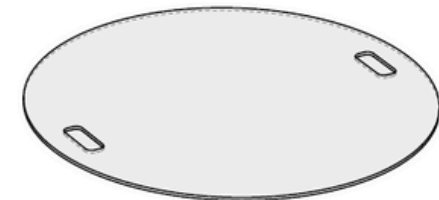
Cover Detail



01 TOP VIEW



02 FRONT VIEW



03 PERSPECTIVE



**MONTANA
FIRE PITS**

www.montanafirepits.com

CONFIDENTIAL

Any information data and drawings embodied in this document are proprietary and strictly confidential, are to be held as confidential and supplied with the understanding that they will not be disclosed, in whole or in part or in any form, to third parties without the prior written consent of Montana Fire Pits. All information, illustrations, screen shots, and data contained are herein Copyright © Montana Fire Pits. All rights reserved.

Model: Toba Agudo Fire Bowl

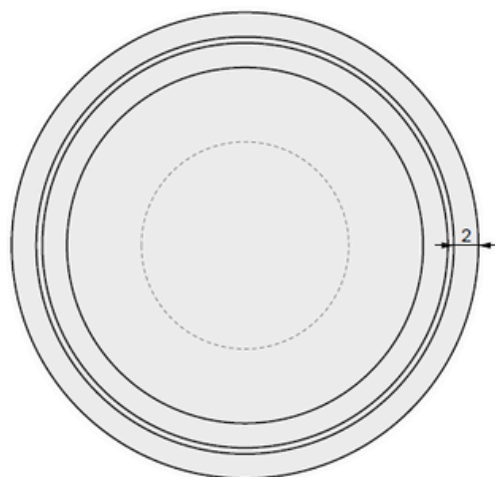
Size: 35" Diameter

Material: GFRC

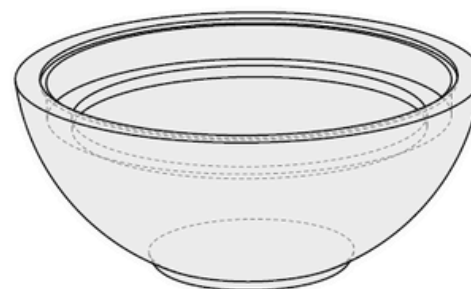
Burner: CFB180 - 180K BTU Original Burner

Fuel Pressure: Natural Gas: 7" Water Column
Propane: 11" Water Column

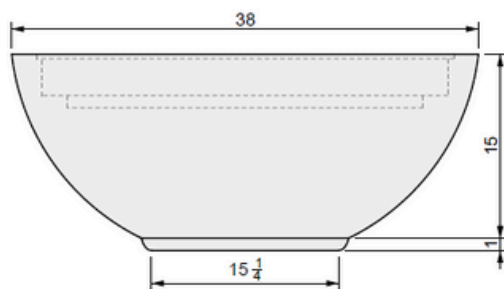
Weight: Approx. 250 lbs.



01 TOP VIEW



04 PERSPECTIVE



02 FRONT VIEW



03 SIDE VIEW



MONTANA
FIRE PITS

www.montanafirepits.com

CONFIDENTIAL

Any information data and drawings embodied in this document are proprietary and strictly confidential, are to be held as confidential and supplied with the understanding that they will not be disclosed, in whole or in part or in any form, to third parties without the prior written consent of Montana Fire Pits. All information, illustrations, screen shots, and data contained are herein Copyright © Montana Fire Pits. All rights reserved.

Model: Toba Agudo Fire Bowl

Size: 38" Diameter

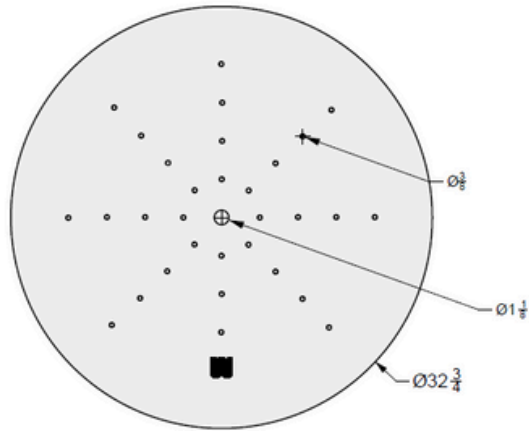
Material: GFRC

Burner: CFB240 - 240K BTU Original Burner

Fuel Pressure: Natural Gas: 7" Water Column
Propane: 11" Water Column

Weight: Approx. 270 lbs

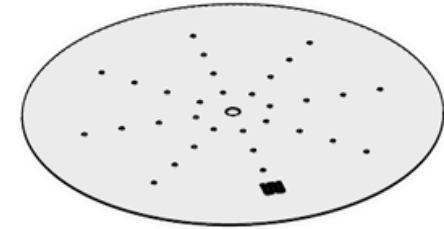
Plate Detail



01 TOP VIEW

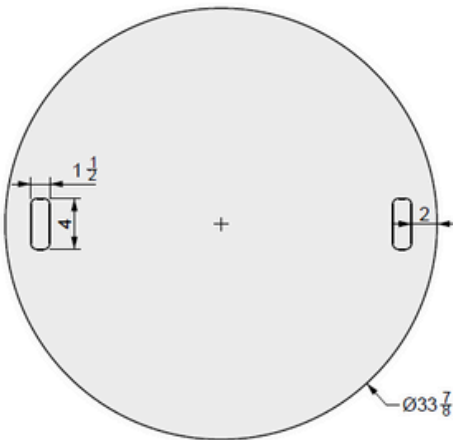


02 FRONT VIEW



03 PERSPECTIVE

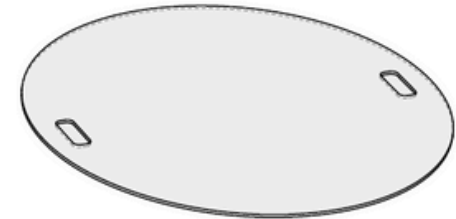
Cover Detail



01 TOP VIEW



02 FRONT VIEW



03 PERSPECTIVE



MONTANA
FIRE PITS

www.montanafirepits.com

CONFIDENTIAL

Any information data and drawings embodied in this document are proprietary and strictly confidential, are to be held as confidential and supplied with the understanding that they will not be disclosed, in whole or in part or in any form, to third parties without the prior written consent of Montana Fire Pits. All information, illustrations, screen shots, and data contained are herein Copyright © Montana Fire Pits. All rights reserved.

Model: Toba Agudo Fire Bowl

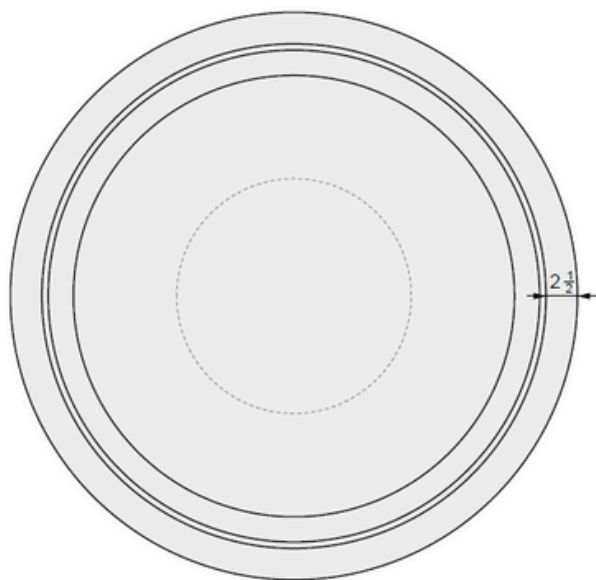
Size: 38" Diameter

Material: GFRC

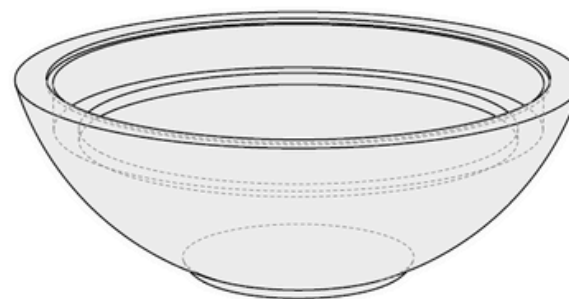
Burner: CFB240 - 240K BTU Original Burner

Fuel Pressure: Natural Gas: 7" Water Column
Propane: 11" Water Column

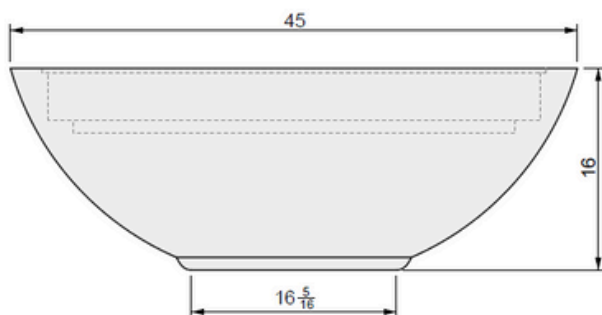
Weight: Approx. 270 lbs



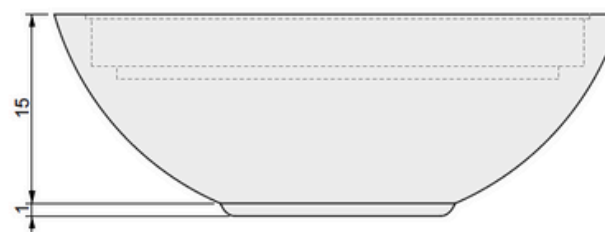
01 TOP VIEW



04 PERSPECTIVE



02 FRONT VIEW



03 SIDE VIEW



MONTANA
FIRE PITS

www.montanafirepits.com

CONFIDENTIAL

Any information data and drawings embodied in this document are proprietary and strictly confidential, are to be held as confidential and supplied with the understanding that they will not be disclosed, in whole or in part or in any form, to third parties without the prior written consent of Montana Fire Pits. All information, illustrations, screen shots, and data contained are herein Copyright © Montana Fire Pits. All rights reserved.

Model: Toba Agudo Fire Bowl

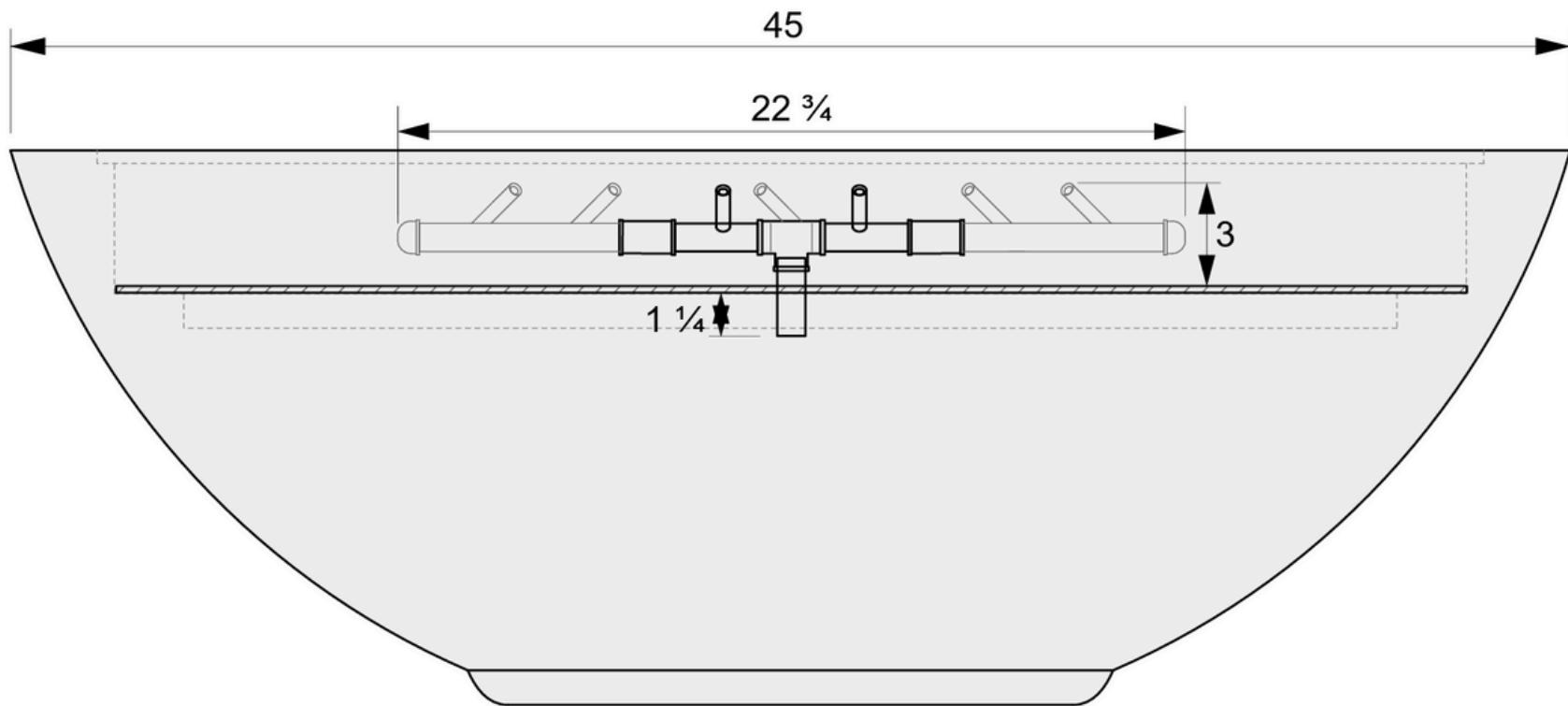
Size: 45" Diameter

Material: GFRC

Burner: CFBO320 - 320K BTU Octagonal

Fuel Pressure: Natural Gas: 7" Water Column
Propane: 11" Water Column

Weight: Approx. 300 lbs.



01 SIDE VIEW



MONTANA
FIRE PITS

www.montanafirepits.com

CONFIDENTIAL

Any information data and drawings embodied in this document are proprietary and strictly confidential, are to be held as confidential and supplied with the understanding that they will not be disclosed, in whole or in part or in any form, to third parties without the prior written consent of Montana Fire Pits. All information, illustrations, screen shots, and data contained are herein Copyright © Montana Fire Pits. All rights reserved.

Model: Toba Agudo Fire Bowl

Size: 45" Diameter

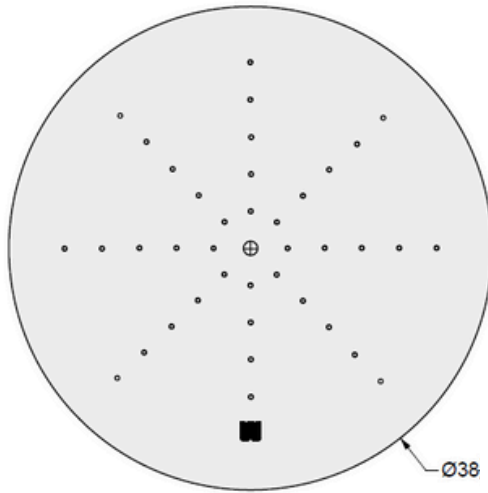
Material: GFRC

Burner: CFBO320 - 320K BTU Octagonal

Fuel Pressure: Natural Gas: 7" Water Column
Propane: 11" Water Column

Weight: Approx. 300 lbs.

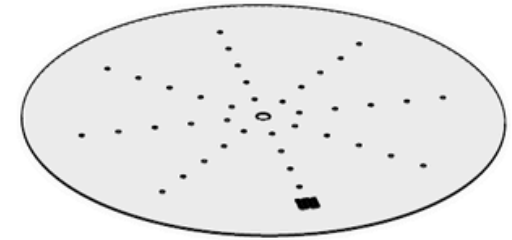
Plate Detail



01 TOP VIEW

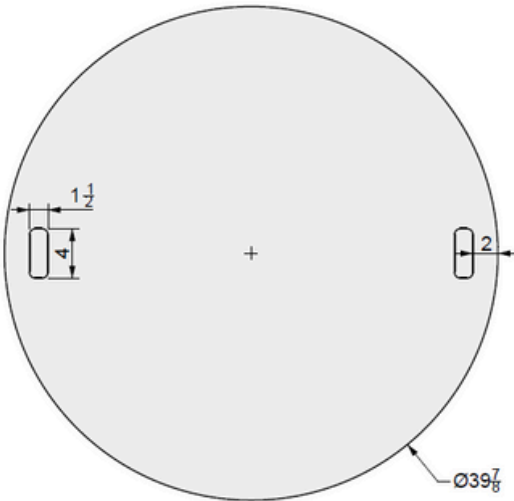


02 FRONT VIEW



03 PERSPECTIVE

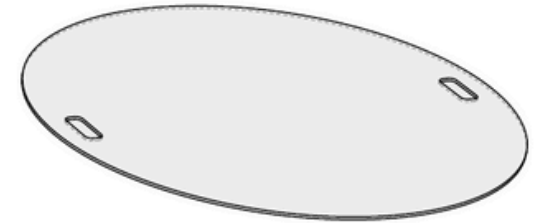
Cover Detail



01 TOP VIEW



02 FRONT VIEW



03 PERSPECTIVE



MONTANA
FIRE PITS

www.montanafirepits.com

CONFIDENTIAL

Any information data and drawings embodied in this document are proprietary and strictly confidential, are to be held as confidential and supplied with the understanding that they will not be disclosed, in whole or in part or in any form, to third parties without the prior written consent of Montana Fire Pits. All information, illustrations, screen shots, and data contained are herein Copyright © Montana Fire Pits. All rights reserved.

Model: Toba Agudo Fire Bowl

Size: 45" Diameter

Material: GFRC

Burner: CFBO320 - 320K BTU Octagonal

Fuel Pressure: Natural Gas: 7" Water Column
Propane: 11" Water Column

Weight: Approx. 300 lbs.