

Size: **55" x 33" x 16"**

The Venture Series



Model: **Acadia Fire Table**

**Includes:**

- Fire Table made of American sourced 3/16" mild steel or aluminum
- Warming Trends Crossfire Brass Burner (see options)
- 3/4" key valve and flex line kit for flame height adjustment (Installed by others).
- 4" chrome key and finishing plate
- Aluminum burner plate (mounted 4" below the finished top)
- 4" non-marring adjustable feet to create ventilation gap

**Optional Extras:**

- 3/16" Aluminum flat cover: 24 lbs
- Propane regulator w/10 ft hose
- Casters
- Mercury Battery Powered Ignition
- Platinum Electronic Ignition

**Fuel Inlet Size:** 3/4" I.D. Female

**Weight:** approx. **S:** 350 lbs.  
**A:** 163 lbs.

**Fuel Pressure:**

Natural Gas: 7" Water Column  
Propane: 11" Water Column

**Standard Burners:** UH120 - 120K BTUs H-Style  
**OR** UT170 - 170K BTUs Tree-Style

**Material:** 3/16" Mild Steel  
or Aluminum

**Protective Finish:** Powder Coating

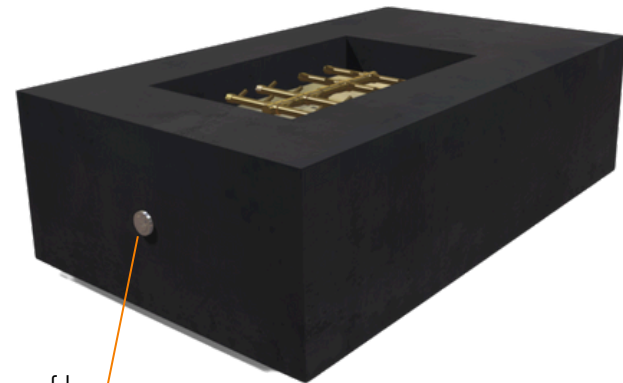
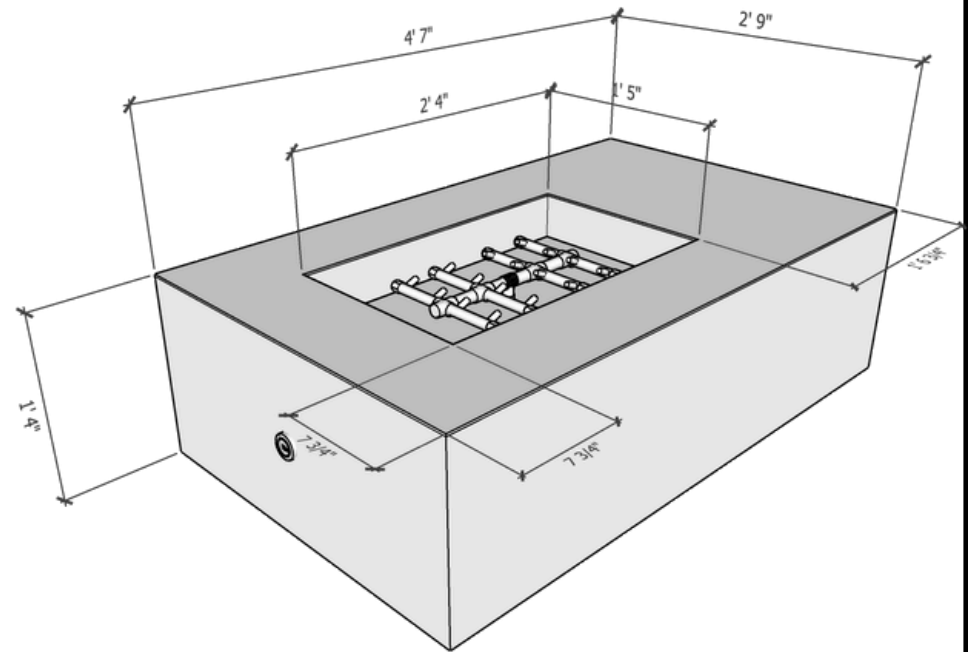


MONTANA  
FIRE PITS

[www.montanafirepits.com](http://www.montanafirepits.com)

**CONFIDENTIAL**

Any information data and drawings embodied in this document are proprietary and strictly confidential, are to be held as confidential and supplied with the understanding that they will not be disclosed, in whole or in part or in any form, to third parties without the prior written consent of Montana Fire Pits. All information, illustrations, screen shots, and data contained are herein Copyright © Montana Fire Pits. All rights reserved.



location of key

Size: **65" x 33" x 16"**

The Venture Series



Model: **Acadia Fire Table**

**Includes:**

- Fire Table made of American sourced 3/16" mild steel or aluminum
- Warming Trends Crossfire Brass Burner
- 3/4" key valve and flex line kit for flame height adjustment (Installed by others).
- 4" chrome key and finishing plate
- Aluminum burner plate (mounted 4" below the finished top)
- 4" non-marring adjustable feet to create ventilation gap

**Optional Extras:**

- 3/16" Aluminum flat cover: 28 lbs
- Propane regulator w/10 ft hose
- Casters
- Mercury Battery Powered Ignition
- Platinum Electronic Ignition

**Fuel Inlet Size:** 3/4" I.D. Female

**Weight:** approx. **S:** 395 lbs. **A:** 185 lbs.

**Fuel Pressure:**

Natural Gas: 7" Water Column

Propane: 11" Water Column

**Burner:** UH160 - 160K BTUs H-Style

**OR** UT170 - 170K BTUs Tree-Style

**Material:** 3/16" Mild Steel  
or Aluminum

**Protective Finish:** Powder Coating

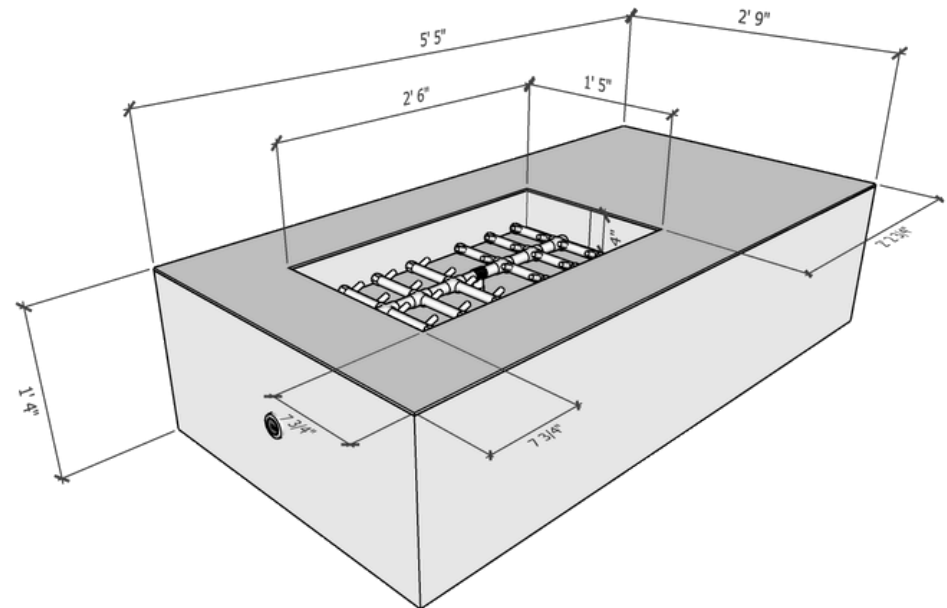


MONTANA  
FIRE PITS

[www.montanafirepits.com](http://www.montanafirepits.com)

**CONFIDENTIAL**

Any information data and drawings embodied in this document are proprietary and strictly confidential, are to be held as confidential and supplied with the understanding that they will not be disclosed, in whole or in part or in any form, to third parties without the prior written consent of Montana Fire Pits. All information, illustrations, screen shots, and data contained are herein Copyright © Montana Fire Pits. All rights reserved.



location of key

Size: **75" x 33" x 16"**

The Venture Series



Model: **Acadia Fire Table**

**Includes:**

- Fire Table made of American sourced 3/16" mild steel
- Warming Trends Crossfire Brass Burner
- 3/4" key valve and flex line kit for flame height adjustment (Installed by others).
- 4" chrome key and finishing plate
- Aluminum burner plate (mounted 4" below the finished top)
- 4" non-marring adjustable feet to create ventilation gap

**Optional Extras:**

- 3/16" Aluminum flat cover: 32 lbs
- Mercury Battery Powered Ignition
- Propane regulator w/10 ft hose
- Platinum Electronic Ignition
- Casters

**Fuel Inlet Size:** 3/4" I.D. Female

**Weight:** 475 lbs.

**Fuel Pressure:**

Natural Gas: 7" Water Column  
Propane: 11" Water Column

**Burner:** UH200 - 200K BTUs H-Style  
**OR** UT230 - 230K BTUs Tree-Style

**Material:** 3/16" Mild Steel

**Protective Finish:** Powder Coating

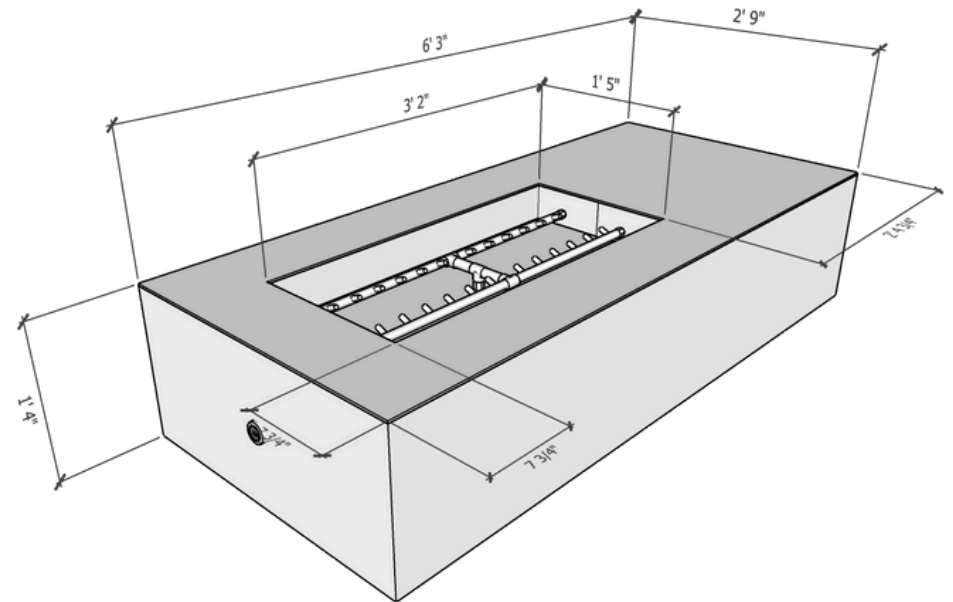


MONTANA  
FIRE PITS

[www.montanafirepits.com](http://www.montanafirepits.com)

**CONFIDENTIAL**

Any information data and drawings embodied in this document are proprietary and strictly confidential, are to be held as confidential and supplied with the understanding that they will not be disclosed, in whole or in part or in any form, to third parties without the prior written consent of Montana Fire Pits. All information, illustrations, screen shots, and data contained are herein Copyright © Montana Fire Pits. All rights reserved.



location of key

Size: **85" x 33" x 16"**

The Venture Series



Model: **Acadia Fire Table**

**Includes:**

- Fire Table made of American sourced 3/16" mild steel or aluminum
- Warming Trends Crossfire Brass Burner (see options)
- 3/4" key valve and flex line kit for flame height adjustment (Installed by others).
- 4" chrome key and finishing plate
- Aluminum burner plate (mounted 4" below the finished top)
- 4" non-marring adjustable feet to create ventilation gap

**Optional Extras:**

- 3/16" Aluminum flat cover: 36 lbs
- Propane regulator w/10 ft hose
- Platinum Electronic Ignition
- Casters

**Fuel Inlet Size:** 3/4" I.D. Female

**Weight:** approx. **S:** 550 lbs.  
**A:** 280 lbs.

**Fuel Pressure:**

Natural Gas: 7" Water Column

Propane: 11" Water Column

**Standard Burner:** UH240 - 240K BTUs H-Style

**Upgrade:** UT290 - 290K BTUs Tree-Style

**Material:** 3/16" Mild Steel  
or Aluminum

**Protective Finish:** Powder Coating

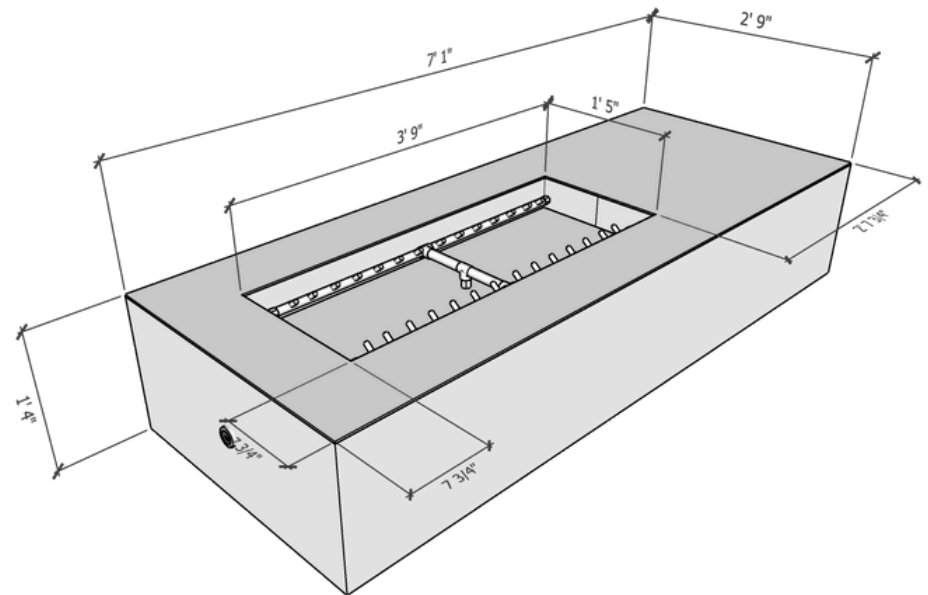


MONTANA  
FIRE PITS

www.montanafirepits.com

**CONFIDENTIAL**

Any information data and drawings embodied in this document are proprietary and strictly confidential, are to be held as confidential and supplied with the understanding that they will not be disclosed, in whole or in part or in any form, to third parties without the prior written consent of Montana Fire Pits. All information, illustrations, screen shots, and data contained are herein Copyright © Montana Fire Pits. All rights reserved.



location of key

Size: **95" x 33" x 16"**

The Venture Series



Model: **Acadia Fire Table**

**Includes:**

- Fire Table made of American sourced 3/16" mild steel or aluminum
- Warming Trends Crossfire Brass Burner (see options)
- 3/4" key valve and flex line kit for flame height adjustment (Installed by others).
- 4" chrome key and finishing plate
- Aluminum burner plate (mounted 4" below the finished top)
- 4" non-marring adjustable feet to create ventilation gap

**Optional Extras:**

- 3/16" Aluminum flat cover: 41 lbs
- Propane regulator w/10 ft hose
- Platinum Electronic Ignition
- Casters

**Fuel Inlet Size:** 3/4" I.D. Female

**Weight:** approx. **S:** 625 lbs.  
**A:** 338 lbs.

**Fuel Pressure:**

Natural Gas: 7" Water Column  
Propane: 11" Water Column

**Standard Burner:** UT290 - 290K BTUs Tree-Style  
**Upgrade:** UH300 - 300K BTUs H-Style

**Material:** 3/16" Mild Steel  
ior Aluminum

**Protective Finish:** Powder Coating

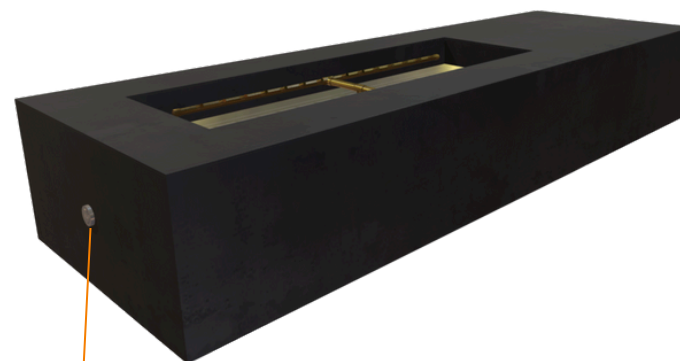
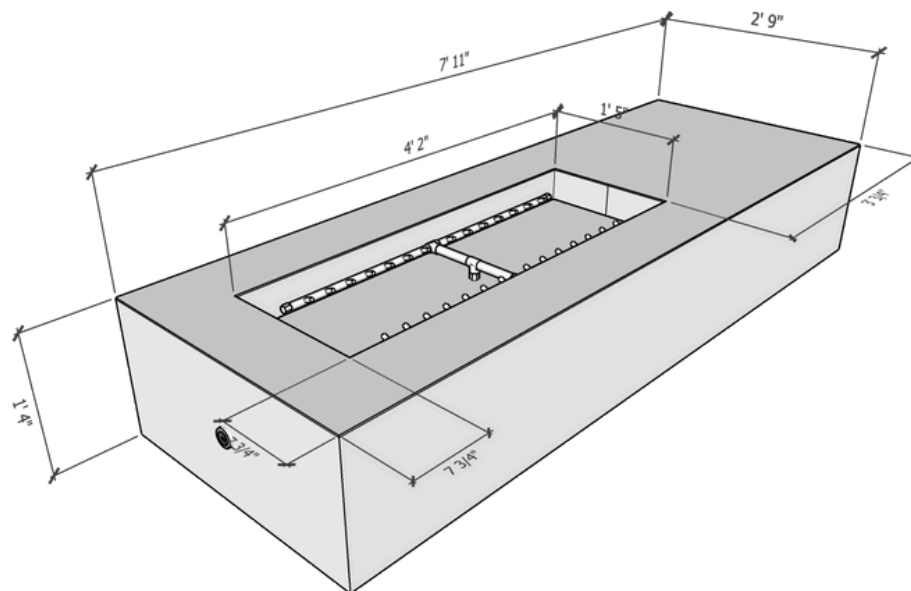


MONTANA  
FIRE PITS

[www.montanafirepits.com](http://www.montanafirepits.com)

**CONFIDENTIAL**

Any information data and drawings embodied in this document are proprietary and strictly confidential, are to be held as confidential and supplied with the understanding that they will not be disclosed, in whole or in part or in any form, to third parties without the prior written consent of Montana Fire Pits. All information, illustrations, screen shots, and data contained are herein Copyright © Montana Fire Pits. All rights reserved.



location of key