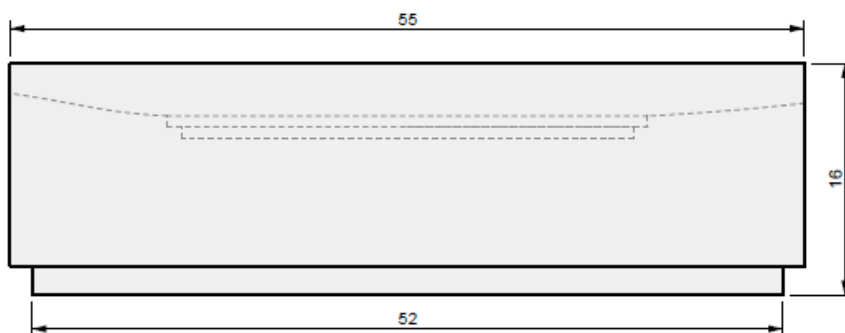
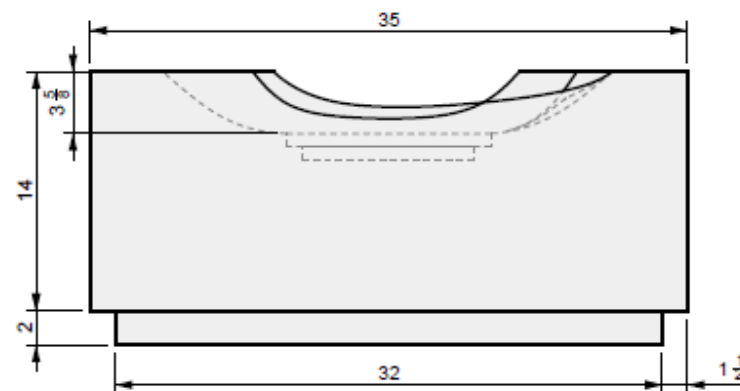


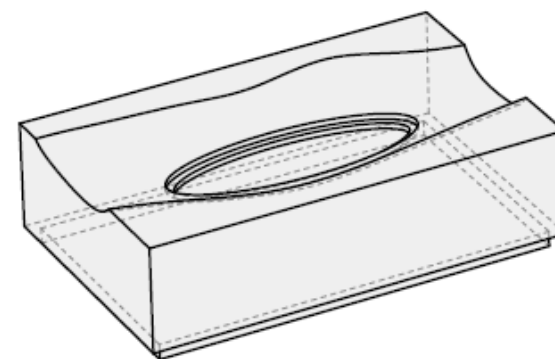
01 TOP VIEW



02 FRONT VIEW



03 SIDE VIEW



04 PERSPECTIVE



MONTANA
FIRE PITS

www.montanafirepits.com

CONFIDENTIAL

Any information data and drawings embodied in this document are proprietary and strictly confidential, are to be held as confidential and supplied with the understanding that they will not be disclosed, in whole or in part or in any form, to third parties without the prior written consent of Montana Fire Pits. All information, illustrations, screen shots, and data contained are herein Copyright © Montana Fire Pits. All rights reserved.

Model: Canyon Fire Table

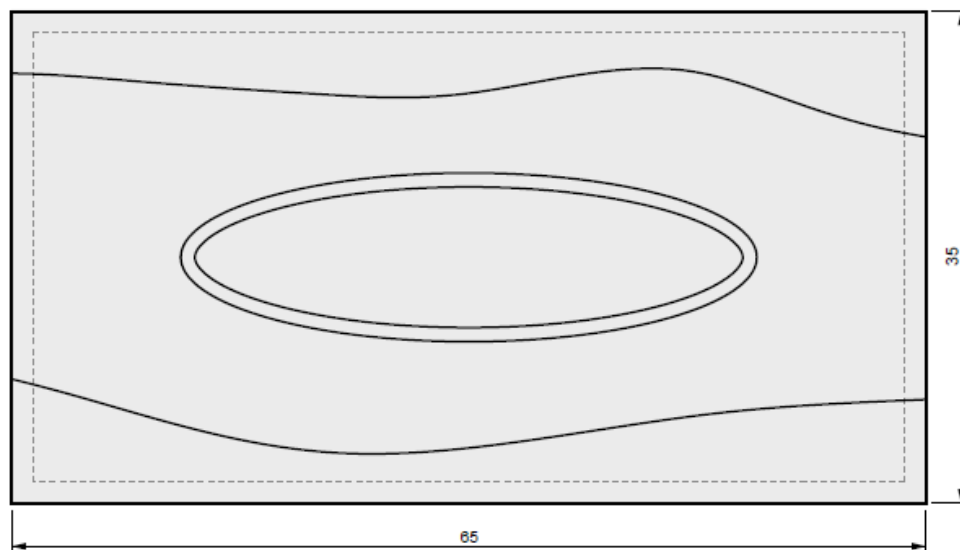
Size: 55" L x 35" W x 16" H

Material: GFRC

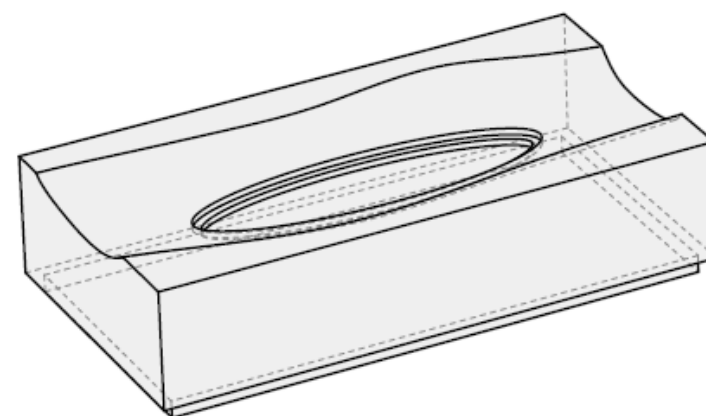
Burner: UL110 - 110K BTU Linear Burner

Fuel Pressure: Natural Gas: 7" Water Column
Propane: 11" Water Column

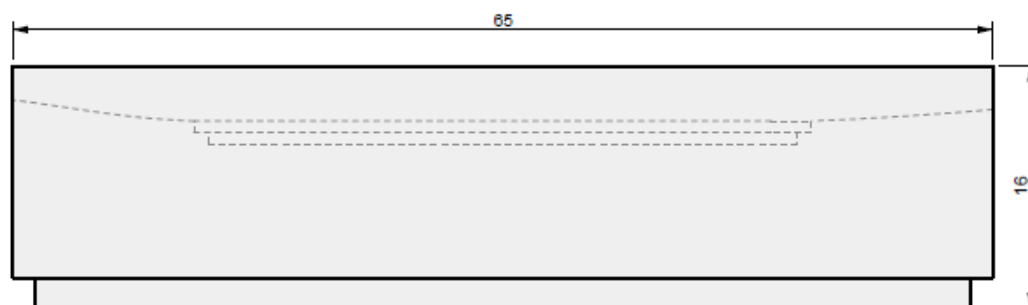
Vessel Weight: 280 lbs.



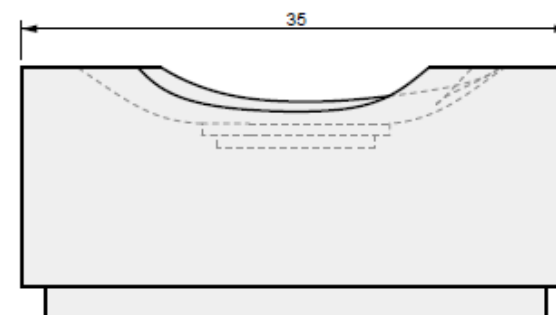
01 TOP VIEW



04 PERSPECTIVE



02 FRONT VIEW



03 SIDE VIEW



MONTANA
FIRE PITS

www.montanafirepits.com

CONFIDENTIAL

Any information data and drawings embodied in this document are proprietary and strictly confidential, are to be held as confidential and supplied with the understanding that they will not be disclosed, in whole or in part or in any form, to third parties without the prior written consent of Montana Fire Pits. All information, illustrations, screen shots, and data contained are herein Copyright © Montana Fire Pits. All rights reserved.

Model: Canyon Fire Table

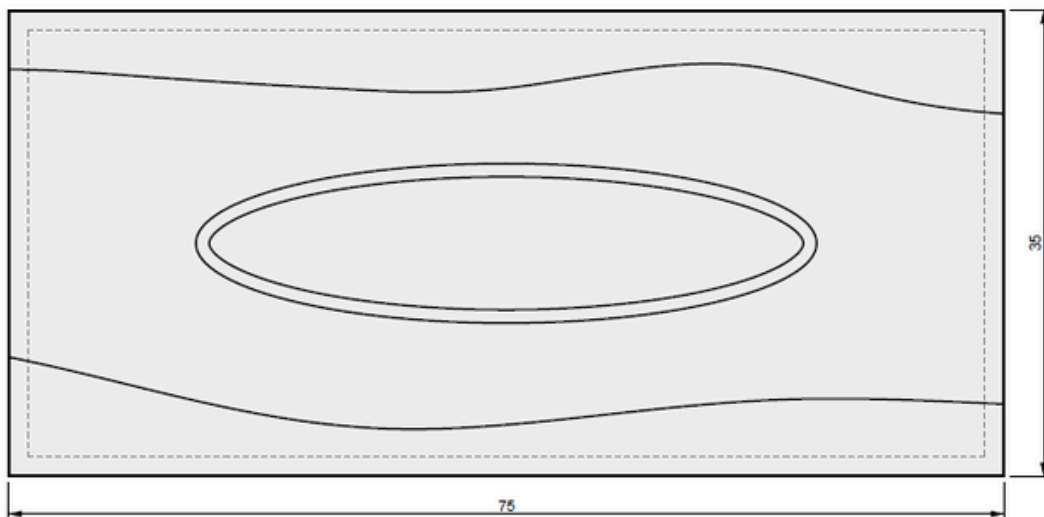
Size: 65" L x 35" W x 16" H

Material: GFRC

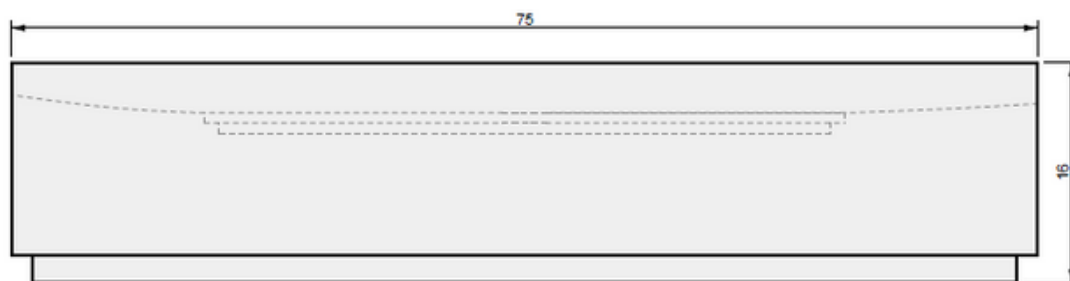
Burner: UL150 - 150K BTU Linear Burner

Fuel Pressure: Natural Gas: 7" Water Column
Propane: 11" Water Column

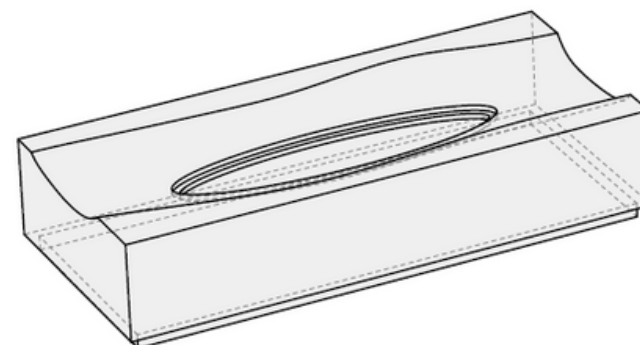
Vessel Weight: 430 lbs.



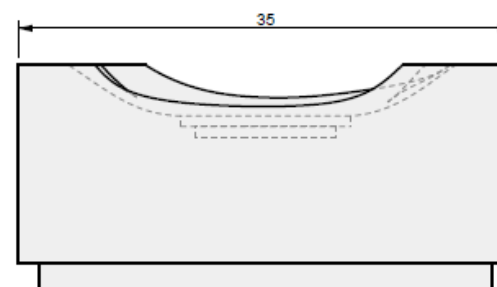
01 TOP VIEW



02 FRONT VIEW



04 PERSPECTIVE



03 SIDE VIEW



MONTANA
FIRE PITS

www.montanafirepits.com

CONFIDENTIAL

Any information data and drawings embodied in this document are proprietary and strictly confidential, are to be held as confidential and supplied with the understanding that they will not be disclosed, in whole or in part or in any form, to third parties without the prior written consent of Montana Fire Pits. All information, illustrations, screen shots, and data contained are herein Copyright © Montana Fire Pits. All rights reserved.

Model: Canyon Fire Table

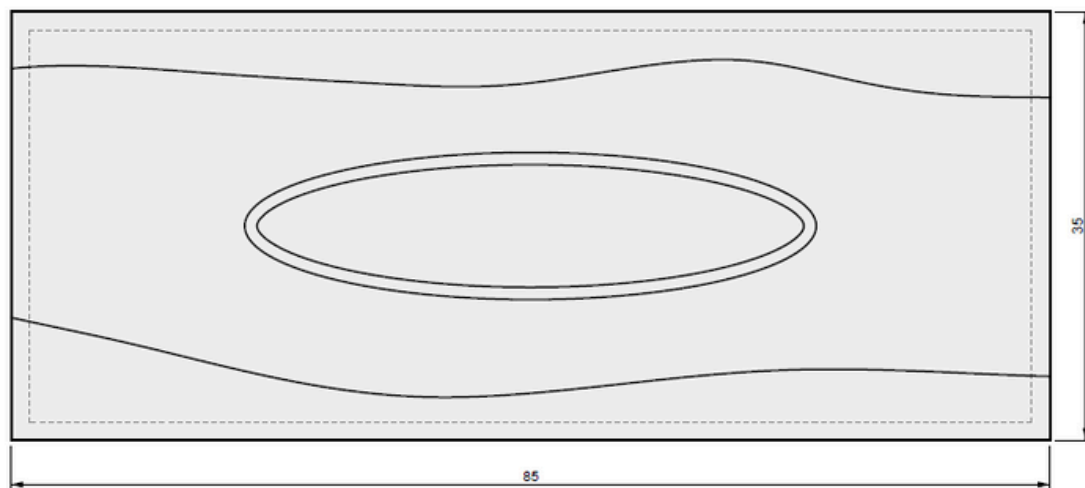
Size: 75" L x 35" W x 16" H

Material: GFRC

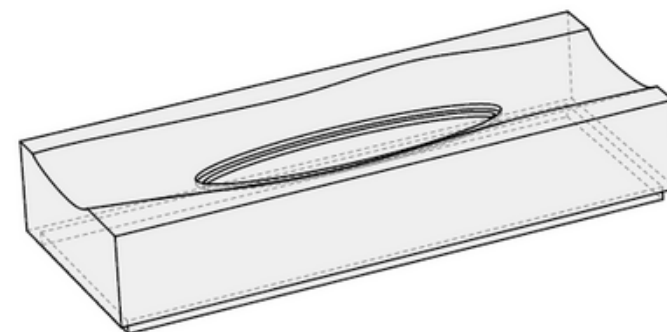
Burner: UL190 - 190K BTU Linear Burner

Fuel Pressure: Natural Gas: 7" Water Column
Propane: 11" Water Column

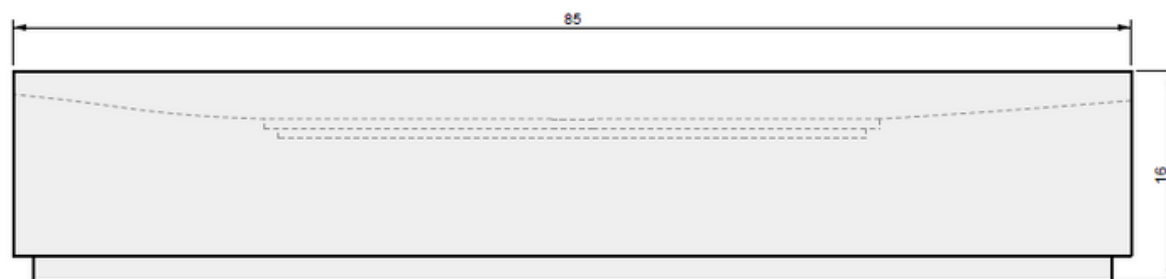
Vessel Weight: 480 lbs.



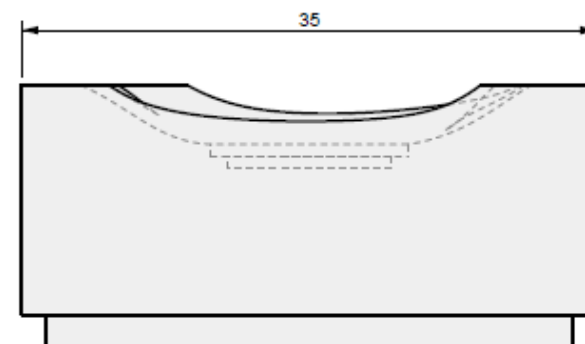
01 TOP VIEW



04 PERSPECTIVE



02 FRONT VIEW



03 SIDE VIEW



MONTANA
FIRE PITS

www.montanafirepits.com

CONFIDENTIAL

Any information data and drawings embodied in this document are proprietary and strictly confidential, are to be held as confidential and supplied with the understanding that they will not be disclosed, in whole or in part or in any form, to third parties without the prior written consent of Montana Fire Pits. All information, illustrations, screen shots, and data contained are herein Copyright © Montana Fire Pits. All rights reserved.

Model: Canyon Fire Table

Size: 85" L x 35" W x 16" H

Material: GFRC

Burner: UL190 - 190K BTU Linear Burner

Fuel Pressure: Natural Gas: 7" Water Column
Propane: 11" Water Column

Vessel Weight: 530 lbs.