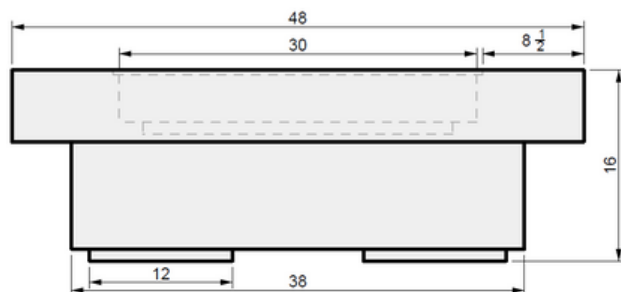
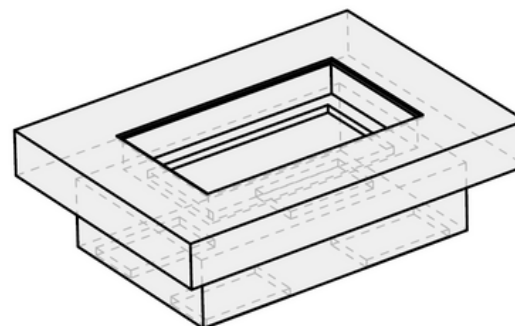


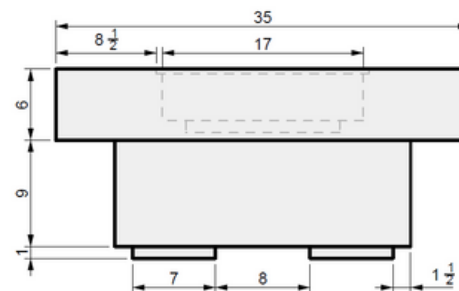
01 TOP VIEW



02 FRONT VIEW



04 PERSPECTIVE



03 SIDE VIEW



MONTANA
FIRE PITS

www.montanafirepits.com

CONFIDENTIAL

Any information data and drawings embodied in this document are proprietary and strictly confidential, are to be held as confidential and supplied with the understanding that they will not be disclosed, in whole or in part or in any form, to third parties without the prior written consent of Montana Fire Pits. All information, illustrations, screen shots, and data contained are herein Copyright © Montana Fire Pits. All rights reserved.

Model: Fortis Fire Table

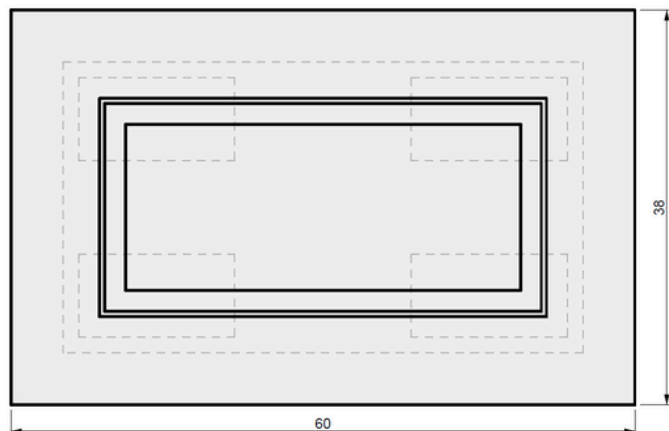
Size: 48" L x 35" W x 16" H

Material: GFRC

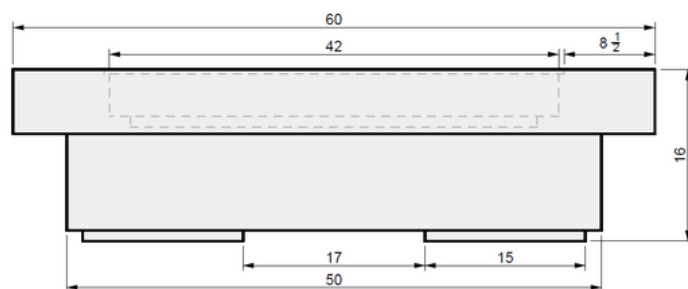
Burner: UT170 - 170K BTU Tree-Style Burner

Fuel Pressure: Natural Gas: 7" Water Column
Propane: 11" Water Column

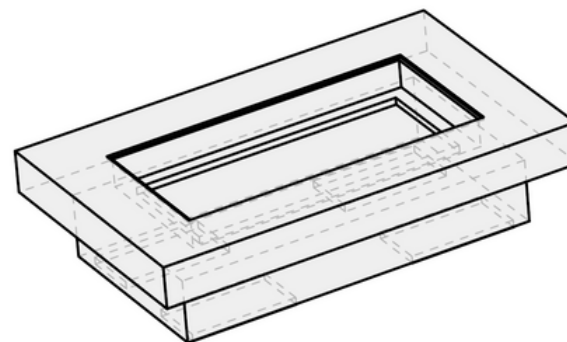
Weight: Approx. 415 lbs.



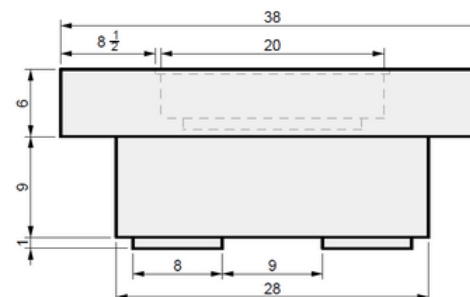
01 TOP VIEW



02 FRONT VIEW



04 PERSPECTIVE



03 SIDE VIEW



MONTANA
FIRE PITS

www.montanafirepits.com

CONFIDENTIAL

Any information data and drawings embodied in this document are proprietary and strictly confidential, are to be held as confidential and supplied with the understanding that they will not be disclosed, in whole or in part or in any form, to third parties without the prior written consent of Montana Fire Pits. All information, illustrations, screen shots, and data contained are herein Copyright © Montana Fire Pits. All rights reserved.

Model: Fortis Fire Table

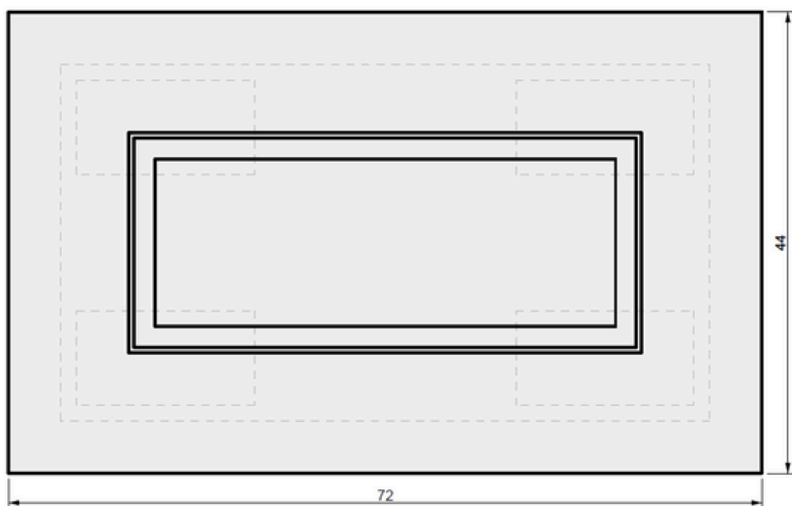
Size: 60" L x 38" W x 16" H

Material: GFRC

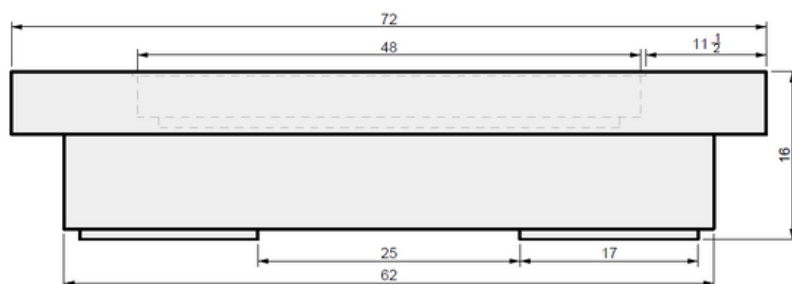
Burner: UT230 - 230K BTU Tree-Style Burner

Fuel Pressure: Natural Gas: 7" Water Column
Propane: 11" Water Column

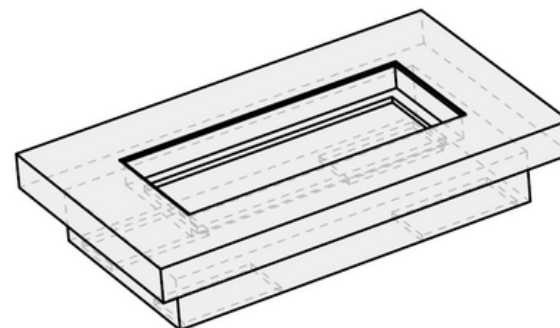
Weight: Approx. 635 lbs.



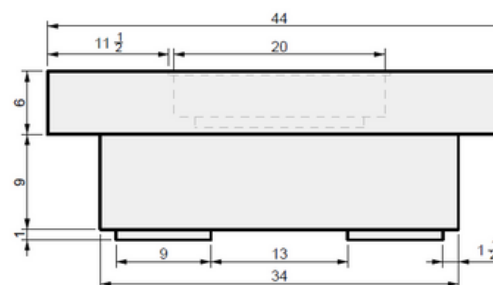
01 TOP VIEW



02 FRONT VIEW



04 PERSPECTIVE



03 SIDE VIEW



MONTANA
FIRE PITS

www.montanafirepits.com

CONFIDENTIAL

Any information data and drawings embodied in this document are proprietary and strictly confidential, are to be held as confidential and supplied with the understanding that they will not be disclosed, in whole or in part or in any form, to third parties without the prior written consent of Montana Fire Pits. All information, illustrations, screen shots, and data contained are herein Copyright © Montana Fire Pits. All rights reserved.

Model: Fortis Fire Table

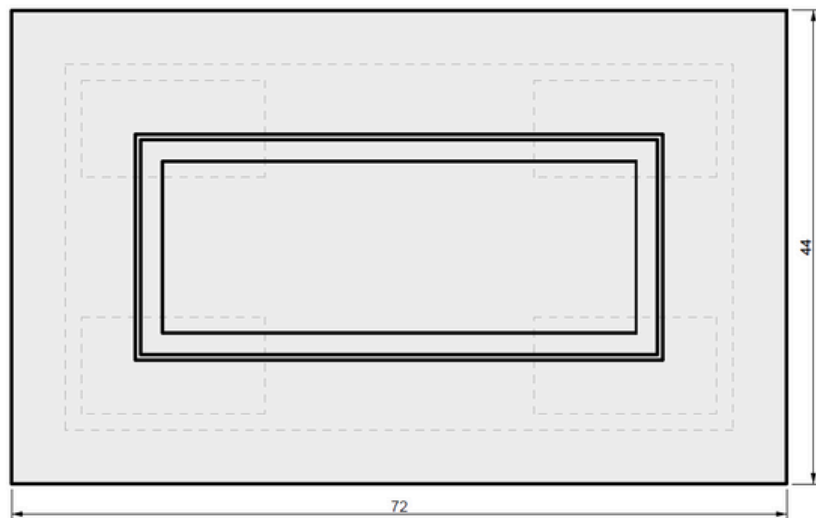
Size: 72" L x 44" W x 16" H

Material: GFRC

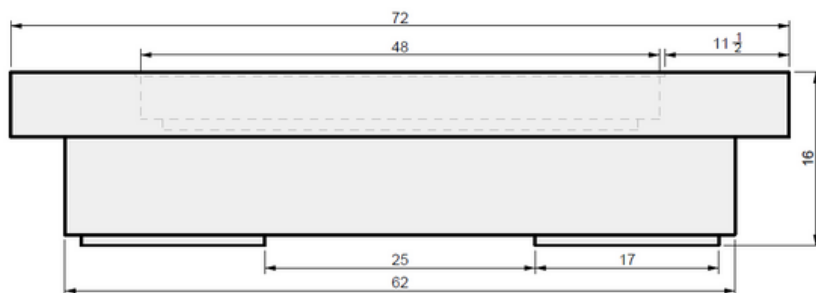
Burner: UT290 - 290K BTU Tree-Style Burner

Fuel Pressure: Natural Gas: 7" Water Column
Propane: 11" Water Column

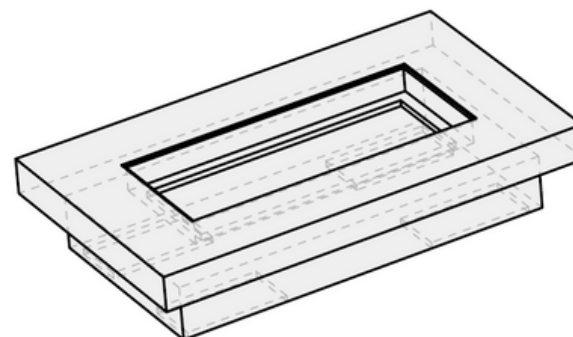
Weight: Approx. 850 lbs.



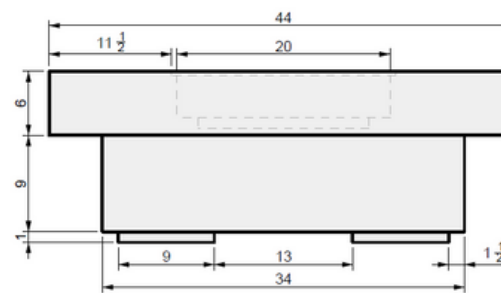
01 TOP VIEW



02 FRONT VIEW



04 PERSPECTIVE



03 SIDE VIEW



MONTANA
FIRE PITS

www.montanafirepits.com

CONFIDENTIAL

Any information data and drawings embodied in this document are proprietary and strictly confidential, are to be held as confidential and supplied with the understanding that they will not be disclosed, in whole or in part or in any form, to third parties without the prior written consent of Montana Fire Pits. All information, illustrations, screen shots, and data contained are herein Copyright © Montana Fire Pits. All rights reserved.

Model: Fortis Fire Table

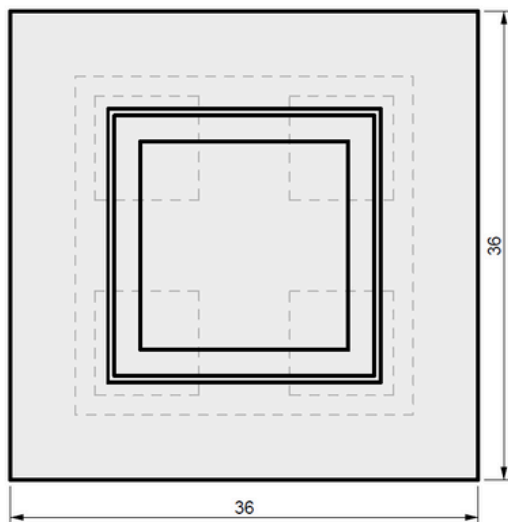
Size: 84" L x 46" W x 16" H

Material: GFRC

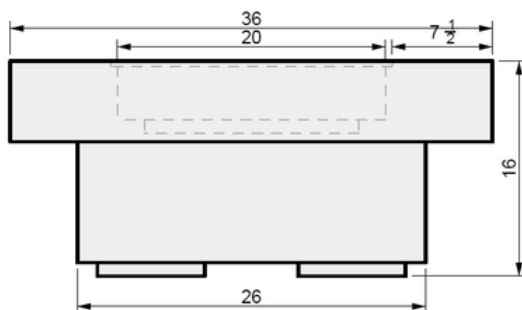
Burner: UT290 - 290K BTU Tree-Style Burner

Fuel Pressure: Natural Gas: 7" Water Column
Propane: 11" Water Column

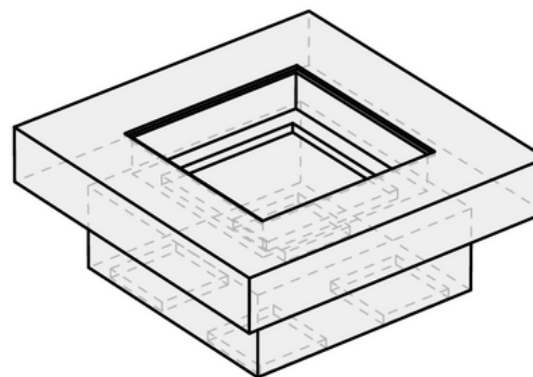
Weight: Approx. 850 lbs.



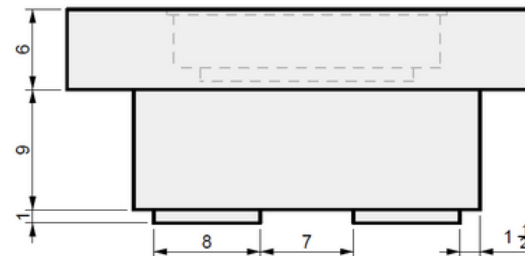
01 TOP VIEW



02 FRONT VIEW



04 PERSPECTIVE



03 SIDE VIEW



MONTANA
FIRE PITS

www.montanafirepits.com

CONFIDENTIAL

Any information data and drawings embodied in this document are proprietary and strictly confidential, are to be held as confidential and supplied with the understanding that they will not be disclosed, in whole or in part or in any form, to third parties without the prior written consent of Montana Fire Pits. All information, illustrations, screen shots, and data contained are herein Copyright © Montana Fire Pits. All rights reserved.

Model: Fortis Fire Table

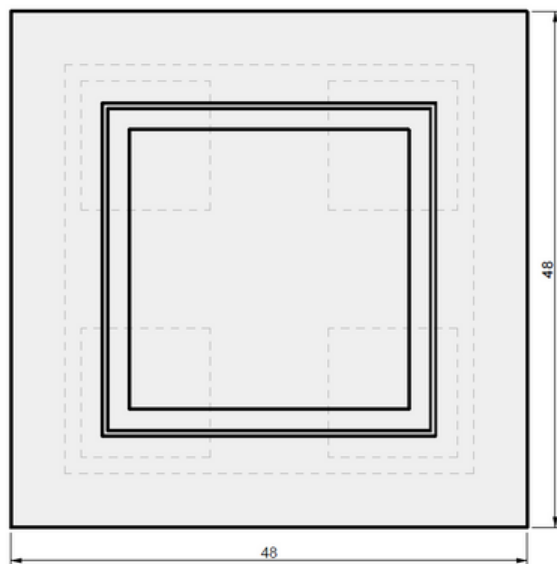
Size: 36" L x 36" W x 16" H

Material: GFRC

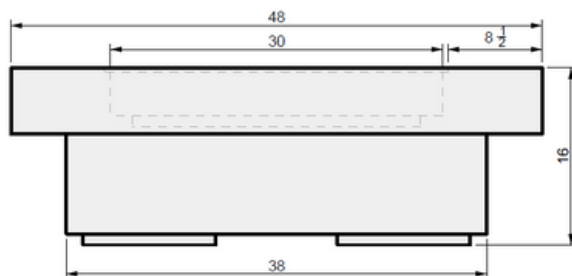
Burner: U100 - 100K BTU Crossfire Burner

Fuel Pressure: Natural Gas: 7" Water Column
Propane: 11" Water Column

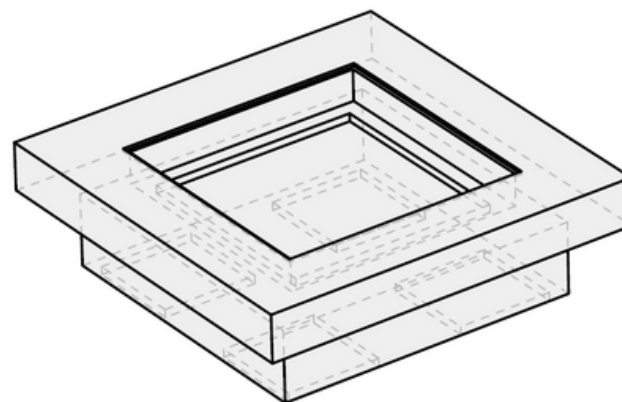
Weight: Approx. 385 lbs.



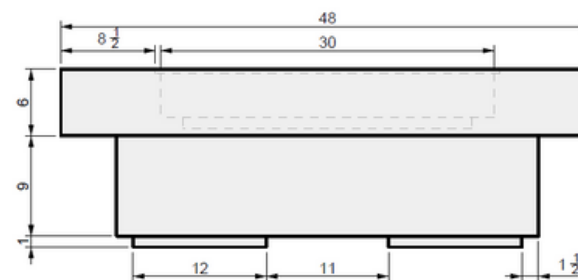
01 TOP VIEW



02 FRONT VIEW



04 PERSPECTIVE



03 SIDE VIEW



MONTANA
FIRE PITS

www.montanafirepits.com

CONFIDENTIAL

Any information data and drawings embodied in this document are proprietary and strictly confidential, are to be held as confidential and supplied with the understanding that they will not be disclosed, in whole or in part or in any form, to third parties without the prior written consent of Montana Fire Pits. All information, illustrations, screen shots, and data contained are herein Copyright © Montana Fire Pits. All rights reserved.

Model: Fortis Fire Table

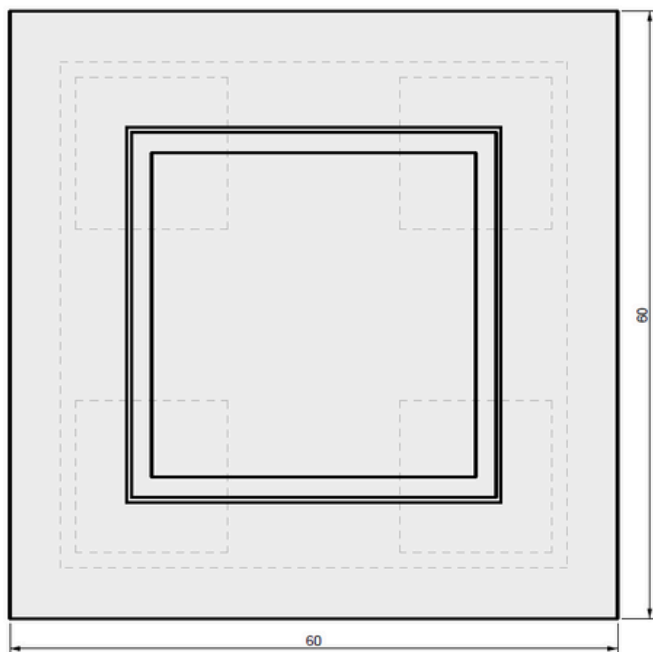
Size: 48" L x 48" W x 16" H

Material: GFRC

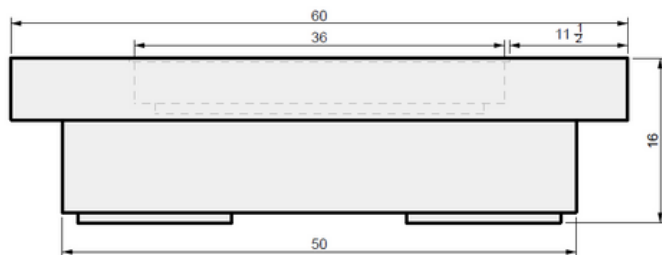
Burner: U240 - 240K BTU Crossfire Burner

Fuel Pressure: Natural Gas: 7" Water Column
Propane: 11" Water Column

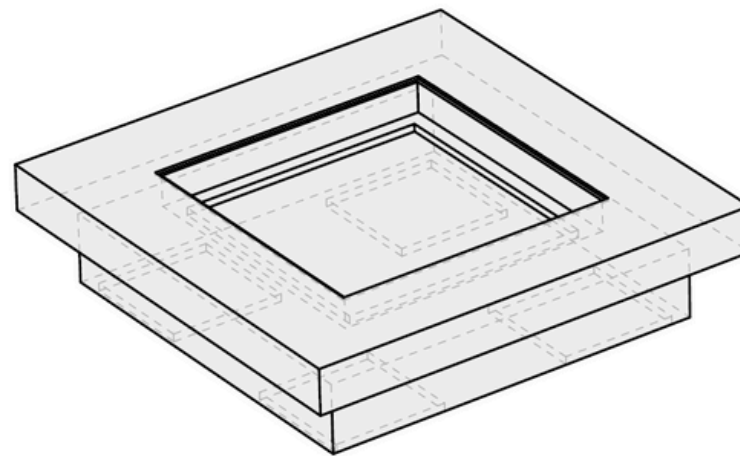
Weight: Approx. 565 lbs.



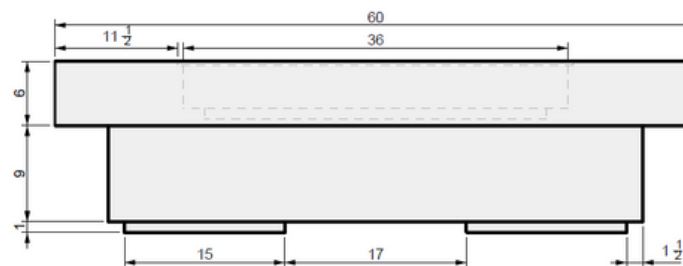
01 TOP VIEW



02 FRONT VIEW



04 PERSPECTIVE



03 SIDE VIEW



MONTANA
FIRE PITS

www.montanafirepits.com

CONFIDENTIAL

Any information data and drawings embodied in this document are proprietary and strictly confidential, are to be held as confidential and supplied with the understanding that they will not be disclosed, in whole or in part or in any form, to third parties without the prior written consent of Montana Fire Pits. All information, illustrations, screen shots, and data contained are herein Copyright © Montana Fire Pits. All rights reserved.

Model: Fortis Fire Table

Size: 60" L x 60" W x 16" H

Material: GFRC

Burner: U300 - 300K BTU Crossfire Burner

Fuel Pressure: Natural Gas: 7" Water Column
Propane: 11" Water Column

Weight: Approx. 650 lbs.