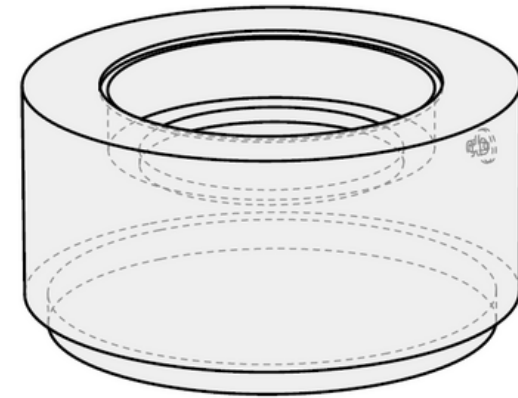
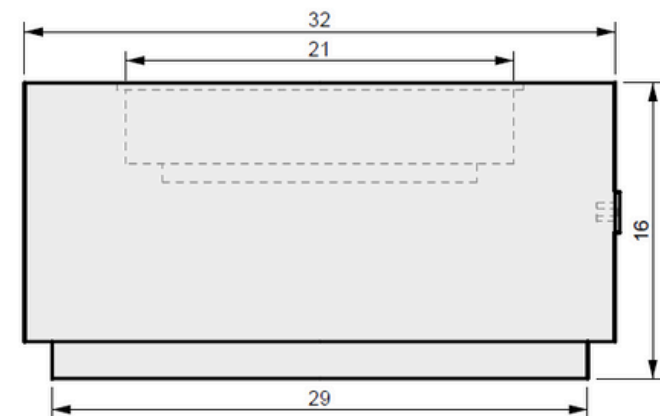


01 TOP VIEW



04 PERSPECTIVE



02 FRONT VIEW



MONTANA
FIRE PITS

www.montanafirepits.com

CONFIDENTIAL

Any information data and drawings embodied in this document are proprietary and strictly confidential, are to be held as confidential and supplied with the understanding that they will not be disclosed, in whole or in part or in any form, to third parties without the prior written consent of Montana Fire Pits. All information, illustrations, screen shots, and data contained are herein Copyright © Montana Fire Pits. All rights reserved.

Model: Oblica Fire Table

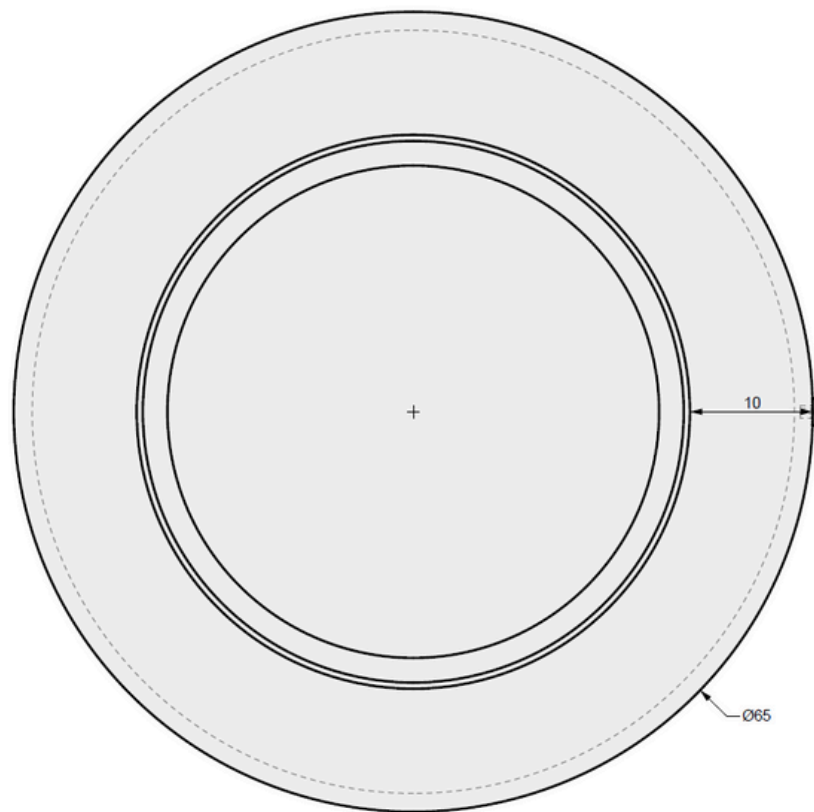
Size: 32" DIA x 16" H

Material: GFRC

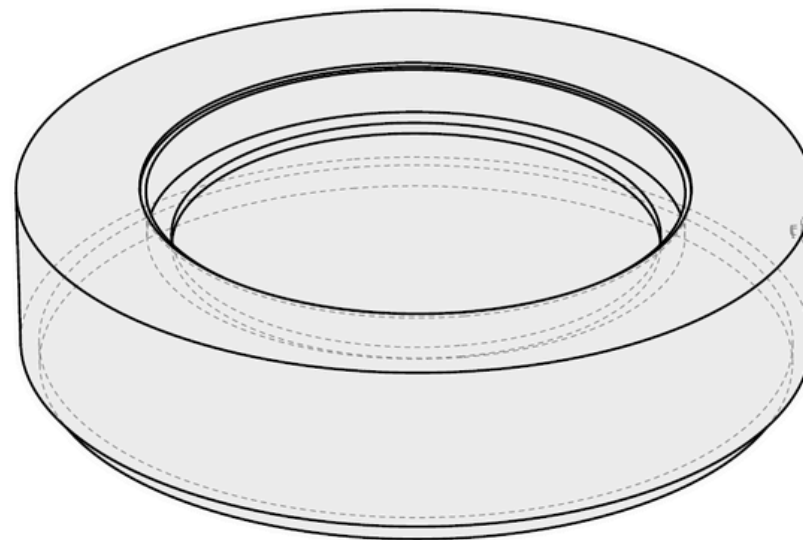
Burner: U140 - 140K BTU Crossfire Burner

Fuel Pressure: Natural Gas: 7" Water Column
Propane: 11" Water Column

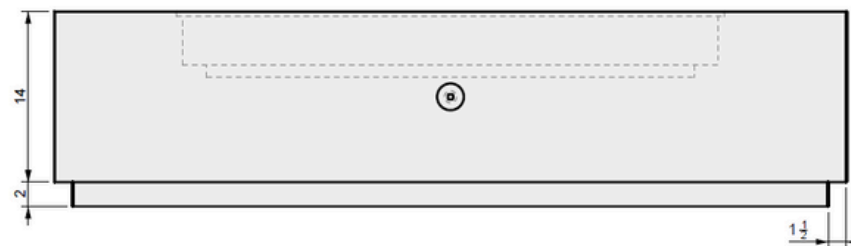
Weight: 250 lbs.



01 TOP VIEW



04 PERSPECTIVE



03 SIDE VIEW



MONTANA
FIRE PITS

www.montanafirepits.com

CONFIDENTIAL

Any information data and drawings embodied in this document are proprietary and strictly confidential, are to be held as confidential and supplied with the understanding that they will not be disclosed, in whole or in part or in any form, to third parties without the prior written consent of Montana Fire Pits. All information, illustrations, screen shots, and data contained are herein Copyright © Montana Fire Pits. All rights reserved.

Model: Oblica Fire Table

Size: 65" DIA x 16" H

Material: GFRC

Burner: U360 - 360K BTU Crossfire Burner

Fuel Pressure: Natural Gas: 7" Water Column
Propane: 11" Water Column

Weight: 420 lbs.