

Size: **28" Diameter**

The Venture Series



Model: **Yellowstone Studio Fire Table**

Includes:

- Fire Table made of American sourced 3/16" mild steel or aluminum
- Warming Trends Crossfire Brass Burner (see options)
- 1/2" key valve and flex line kit for flame height adjustment (Installed by others).
- 3" chrome key and finishing plate
- Aluminum burner plate (mounted 4" below the finished top)
- 4" non-marring adjustable feet to create ventilation gap

Optional Extras:

- 3/16" Aluminum flat cover: 12 lbs.
- Mercury Battery Powered Ignition
- Propane regulator w/10 ft hose
- Casters

Fuel Inlet Size: 1/2" I.D. Female

Weight: approx. **S:** 180 lbs.
A: 95 lbs.

Fuel Pressure:

Natural Gas: 7" Water Column
Propane: 11" Water Column

Standard Burner: U60 - 60K BTUs

Upgrades: U100 - 100K BTUs

Material: 3/16" Mild Steel
or Aluminum

Protective Finish: Powder Coating

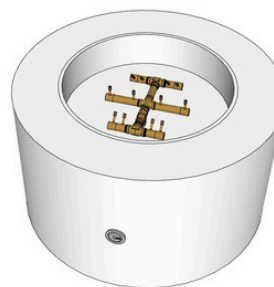
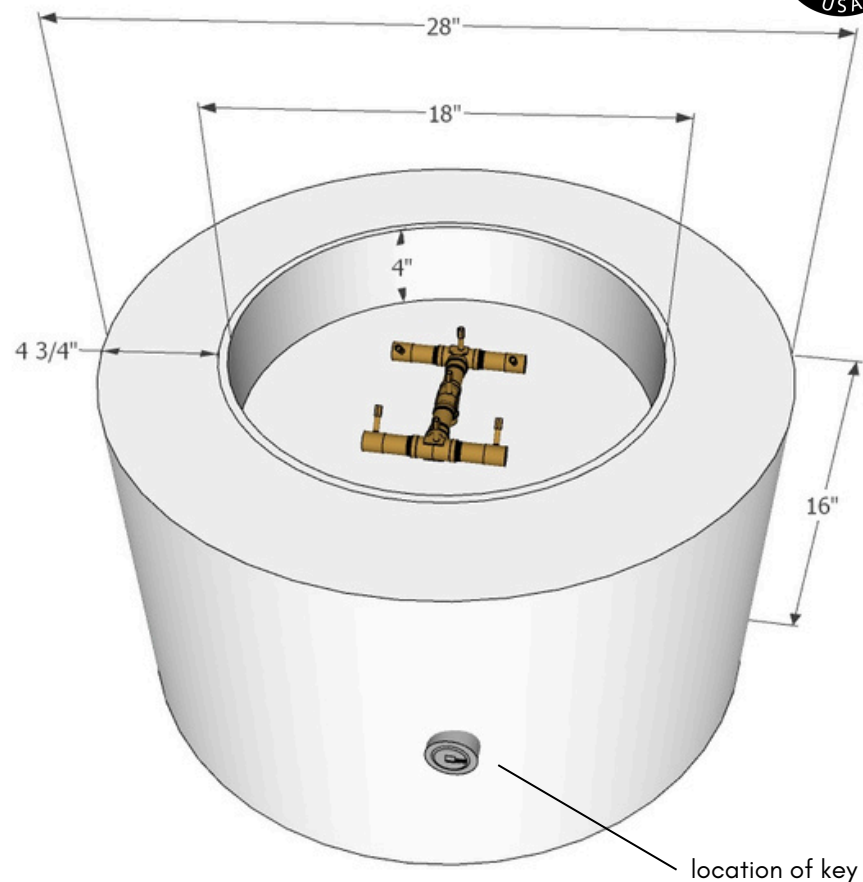


MONTANA
FIRE PITS

www.montanafirepits.com

CONFIDENTIAL

Any information data and drawings embodied in this document are proprietary and strictly confidential, are to be held as confidential and supplied with the understanding that they will not be disclosed, in whole or in part or in any form, to third parties without the prior written consent of Montana Fire Pits. All information, illustrations, screen shots, and data contained are herein Copyright © Montana Fire Pits. All rights reserved.



with CFBCT120



with CFBO140

Size: **34" Diameter**

The Venture Series



Model: **Yellowstone Studio Fire Table**

Includes:

- Fire Table made of American sourced 3/16" mild steel or aluminum
- Warming Trends Crossfire Brass Burner (see options)
- 1/2" key valve and flex line kit for flame height adjustment (Installed by others)
- 3" chrome key and finishing plate
- Aluminum burner plate (mounted 4" below the finished top)
- 4" non-marring adjustable feet to create ventilation gap

Optional Extras:

- 3/16" Aluminum flat cover: 16 lbs.
- Mercury Battery Powered Ignition
- Propane regulator w/10 ft hose
- Casters

Fuel Inlet Size: 1/2" I.D. Female

Weight: approx. **S:** 220 lbs. **A:** 110 lbs.

Fuel Pressure: Natural Gas: 7" Water Column
Propane: 11" Water Column

Standard Burner: U100 - 100K BTUs

Upgrade: U140 - 140K BTUs or U180 - 180K BTUs

Material: 3/16" Mild Steel or Aluminum

Protective Finish: Powder Coating

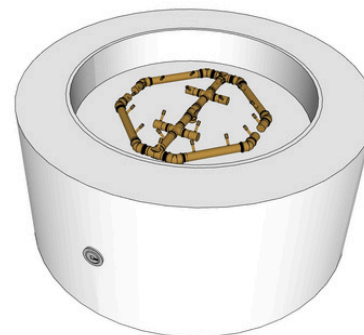
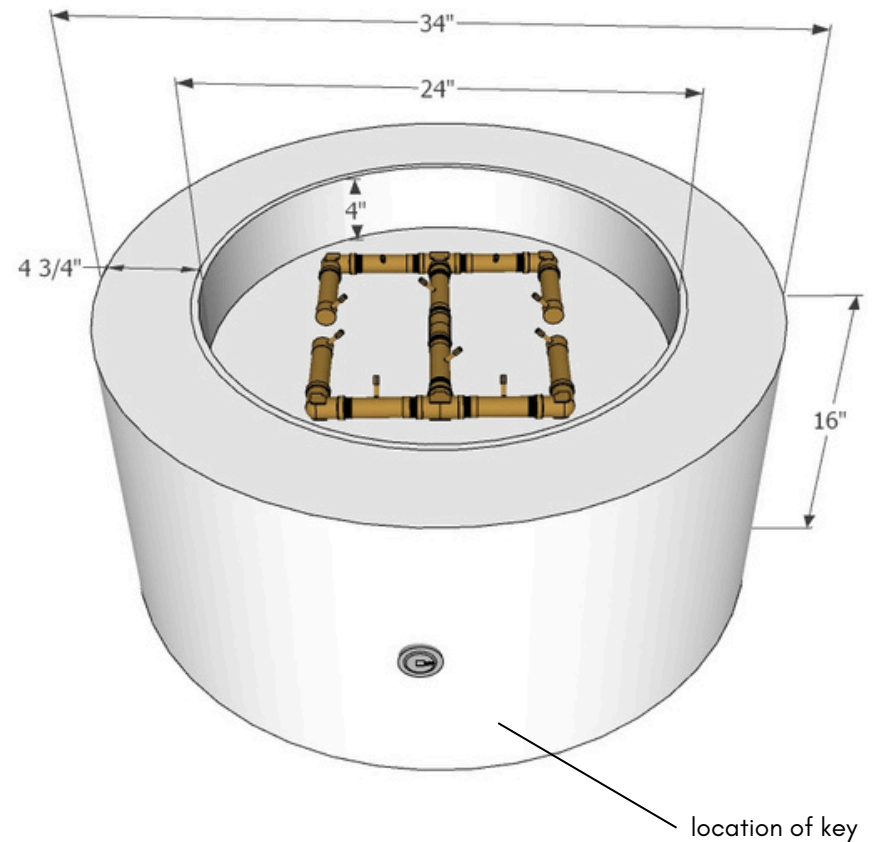


**MONTANA
FIRE PITS**

www.montanafirepits.com

CONFIDENTIAL

Any information data and drawings embodied in this document are proprietary and strictly confidential, are to be held as confidential and supplied with the understanding that they will not be disclosed, in whole or in part or in any form, to third parties without the prior written consent of Montana Fire Pits. All information, illustrations, screen shots, and data contained are herein Copyright © Montana Fire Pits. All rights reserved.



with CFBO180